



COMPARISON OF TWO AND THREE VERTEBRAL SEGMENT POSTEROLATERAL FUSION IN THE TREATMENT OF ISTHMIC SPONDYLOLISTHESIS

İSTMİK SPONDİLOLİSTEZİS TEDAVİSİNDE İKİ İLE ÜÇ MOBİL SEGMENTİN POSTEROLATERAL FÜZYON YAPILMASININ KARŞILAŞTIRILMASI

Serkan BILGIC¹,
Omer ERSEN²,
Safak EKINCI¹,
Kenan KOCA²,
Tolga EGE²,
Erbil OGUZ²

¹Department of Orthopaedic Surgery,
Haydarpaşa GATA Military Hospital,
Istanbul, Turkey.

² Department of Orthopaedic Surgery,
Gulhane Military Hospital, Ankara,
Turkey.

ABSTRACT:

The aim of this retrospective study was to determine the effect of the number of fusion levels on the clinical results of adult isthmic spondylolisthesis patients who had undergone posterior instrumentation and fusion.

This retrospective study comprised 37 (20 male, 17 female) patients. Radiological evaluation was made by anteroposterior, lateral, oblique and lateral flexion-extension x-rays. The mean age of the patients was 36.4± 9.2 years and the mean follow-up period was 34.3 months. Three segment fusion was applied to 22 patients and two segment fusion was applied to 15 patients.

In the single-level group screw loosening occurred in 3 patients and screw breakage in 1 due to the pseudoarthrosis. This study has demonstrated that two-level posterior instrumentation and fusion with local bone grafts and demineralized bone matrix have significantly better clinical and radiological results than single-level surgery. To avoid potential complications of posterolateral interbody fusion, two-level posterolateral fusion can be an alternative treatment option.

Key words: Spondylolisthesis; posterior fusion

Level of evidence: Retrospective clinical study, Level III

ÖZET:

Bu retrospektif çalışmanın amacı posterior enstrümantasyon ve füzyon uygulanan erişkin istmik spondilolistesiz hastalarında füzyon uygulanan seviye sayısının klinik sonuçlara etkisini belirlemektir.

Çalışmaya 37 hasta (20 erkek, 17 kadın) dâhil edildi. Radyolojik değerlendirme ön-arka, lateral, oblik ve lateral fleksiyon ekstansiyon grafileri ile yapıldı. Hastaların ortalama yaşı 36,4 ± 9,2 idi ve ortalama takip süresi 34,3 aydı.

Yirmi iki hastaya üç segment içeren füzyon 15 hastaya iki segment içeren füzyon uygulandı. İki segment füzyon uygulanan grupta 3 hastada implant yetmezliği bir hastada psödoartroz görüldü. Bu çalışma iki seviyeli füzyon uygulananlarda tek seviyeli füzyon uygulananlara göre daha iyi klinik ve radyolojik sonuçlar olduğunu göstermiştir. Posterolateral cisimler arası füzyonun potansiyel komplikasyonlarından kaçınmak için iki seviyeli füzyon uygulanması önerilir.

Anahtar kelimeler: Spondilolistesiz; posterior füzyon

Kanıt düzeyi: Retrospektif klinik çalışma, Düzey III

Adress: Safak Ekinci, MD,
Department of Orthopaedic Surgery,
Gulhane Military Hospital, Ankara,
Turkey.

E-mail: merschenn@yahoo.com

Phone: +90 533 527 51 81

Fax: +90 312 304 55 00

Received: 13th June, 2016.

Accepted: 14th August, 2016.

INTRODUCTION:

Lumbar spondylolisthesis is present in about 5% to 6% of the population with various etiopathogenesis. Due to its variant pathological anatomy, the radiological appearance, age and clinical aspect of the patients are different on diagnosis. It generally starts as spondylolysis, a bilateral pars fatigue fracture and becomes spondylolisthesis with a slip of a vertebra over the adjacent one. As the slip increases, disc degeneration and pain starts^{5,7,15}.

Although conservative treatment is the first treatment option, surgery for symptomatic spondylolisthesis in adults has been found to have better clinical results than conservative treatment choices^{13,15}. However, it remains unclear which surgical strategy should be adopted, as there is limited scientific evidence on which to base an optimal treatment method. Discussions on spondylolisthesis treatment have generally focused on reduction, fusion levels, graft choices, and surgical techniques^{6,9,20}.

One of the most preferred surgical treatment options for spondylolisthesis is posterior transpedicular instrumentation of the relevant segments and posterolateral fusion (PLF)^{6,20}. However, it is still a matter of controversy in literature as to how many levels should be fused and instrumented.

The aim of this retrospective study was to determine the effect of the number of fusion levels on the clinical results of adult isthmic spondylolisthesis patients who had undergone posterior instrumentation and PLF.

MATERIALS AND METHODS:

This retrospective study comprised 37 (20 male, 17 female) patients with isthmic spondylolisthesis who had undergone posterior instrumentation and PLF between January 2005 and May 2011. Patients with spondylolisthesis other than Type 2 according to the Wiltse classification were excluded from the study. Pre and post-operative radiological evaluation was made by anteroposterior, lateral, oblique and lateral flexion-extension x-rays. Preoperative spondylolisthesis slippage grading was evaluated according to the Meyerding classification from the preoperative radiographs. The decompression decision was made preoperatively according to magnetic resonance imaging (MRI) and patients' preoperative neurological evaluation. Preoperative and postoperative neurological status, duration of surgery, number of fused and instrumented levels, total blood loss and complications were evaluated from the clinical database. For clinical evaluation of surgical outcomes, the Oswestry Disability Index (ODI) and Visual Analog Scale (VAS) applied at the final follow-up were used.

Surgical procedure:

Exposure was obtained from the spinous processes to the transverse processes bilaterally throughout segments planned for fusion. Under fluoroscopic control, 6.5 mm pedicle screws were placed by free-hand technique. No reduction manoeuvre was used. Decompression of the segments, which had been determined by preoperative MRI and clinical examination was performed for the patients with neurological deficit. In all cases PLF was performed. In the area planned for fusion, the spinous processes were resected, peeled off from soft tissues and used for grafting with demineralized bone matrix. Patients were mobilized with a soft brace on the first postoperative day and the brace was continued for 3 months. (Figure-1, 2)

Statistical analysis:

We used the SPSS software package (version 15.0, SPSS, Chicago, IL) and expressed categorical variables as percentages and continuous variables as mean \pm standard deviation (SD) or median (quartiles). Kolmogorov-Smirnov test was used to evaluate whether the distribution of continuous variables was normal. For parameters that showed normal distribution we used the paired sample t test and for parameters that did not show normal distribution the Mann-Whitney U-test was used. Chi-square test was used to analyze categorical variables. Statistical significance was set at $p < 0.05$.



Figure-1. AP lumbar x-ray of 35 year-old female postop 2 years.



Figure-2. Lateral lumbar x-ray of 35 year-old female postop 2 years.

RESULTS:

All patients had a history of at least 3 months of lumbar pain due to the spondylolisthesis, which had proved to be resistant to conservative treatment. The mean age of the patients was 36.4 ± 9.2 years and the mean follow-up period was 34.3 months. Low-grade isthmic spondylolisthesis was present at L5-S1 level in 23 patients, at L4-5 level in 13 patients and at L3-4 level in 1 patient. Two-level fusion was applied to 22 patients and single-level fusion was applied to 15 patients. Decompression was performed on 7 patients in the two-level fusion group and on 6 patients in the single-level fusion group. There were no neurological complications after surgery in either group. Mean duration of surgery for single-level and two-level surgery was 160 minutes and 190 minutes (160-240), and average blood loss was 285 ml and 390 ml respectively. There were no differences between the two groups in terms of demographic properties (Table-1).

Table-1. Parameters of groups during surgery.

	Surgery Time (min)	Blood Loss (ml)	p
Single-level	160±29	285±89	0,127
Two-level	190±34	390±95	0,084

One of the patients in the two-level PLF group had superficial infection and was treated with debridement and antibiotherapy. No union complications were seen in the two-level PLF group but in the single-level PLF group, screw loosening occurred in 3 patients and screw breakage in 1 due to the pseudoarthrosis. These four patients were revised with two-level PLF. (Figure-3)

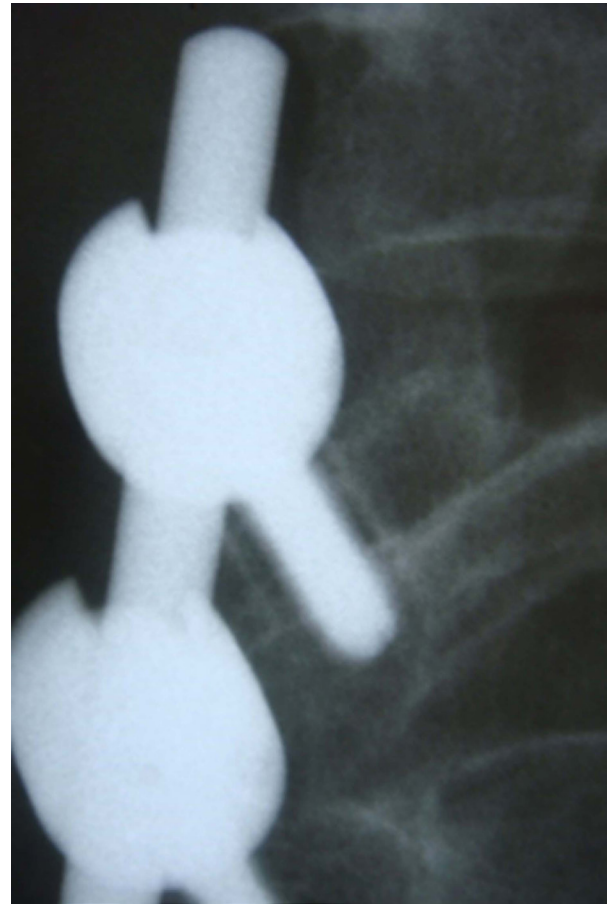


Figure-3. Loosening of screw in single-level PLF.

ODI scores from the final follow-up were 12.2 ± 6.2 in the single-level PLF group, and 9.2 ± 6.4 in the two-level PLF group ($p=0,035$). VAS scores were 3.2 ± 1.7 in the single-level PLF group and 2.9 ± 1.6 in the two-level PLF group ($p=0.043$). The ODI and VAS scores of the patients revised with two-level PLF were excluded from the clinical evaluation.

DISCUSSION:

Lumbar spondylolisthesis has several etiopathogenesis factors as was shown by Marchetti and Bartolozzi giving rise to variations in pathological anatomy, radiological findings, age and clinical symptoms of the patients on diagnosis. When conservative treatment options fail, surgery becomes

the next step. Although there have been a large number of studies on spondylolisthesis, there is no clear evidence for a single superior treatment option. Anterior lumbar interbody fusion (ALIF), posterior lumbar interbody fusion (PLIF) and PLF with/without instrumentation are the most widely accepted surgical methods. Whilst PLF with instrumentation is the most preferred treatment for most authors, there is no scientific evidence showing that PLF is disadvantageous compared to PLIF or circumferential fusion^{1,4,8,11} even though the major theoretical advantage of PLIF and circumferential fusion seems to have resulted in improved outcomes compared with PLF. Ekman et al³ found that the type of fusion, whether PLIF or PLF, did not affect the outcome of surgical treatment of adult isthmic spondylolisthesis over a two year follow-up period. Furthermore, PLIF is a more invasive, technically more difficult method requiring a longer operative time, which may result in increased blood loss and higher complication rates^{3,12}. Similarly, Kim et al. could not demonstrate any difference between ALIF and PLF with instrumentation¹¹. Although circumferential fusion was reported as significantly better than PLF at 6 months and 1 year in a study by Swan, no difference was determined at two years¹⁹. In a systematic review of 29 high quality studies, Jacobs and al. found no difference between different fusion techniques¹⁰. In the current study the treatment choice was PLF with instrumentation which is a relatively easy method with a shorter operating time and lower blood loss compared to other techniques in literature.

When performing PLF, slip reduction can be achieved during the same procedure. The advantages of slip reduction include improved spine biomechanics, better nerve root decompression and a better opportunity for fusion by relieving tension and shear forces⁶. Although the major disadvantage of slip reduction is increased risk of neurological injury, there have been numerous studies evaluating slip reduction for adult low grade spondylolisthesis¹⁶⁻¹⁸. In the current study, slip reduction was not performed to avoid the possibility of potential neurological damage and as all the cases had low grade isthmic spondylolisthesis.

To protect one more mobile segment, some authors have preferred single-level postero-lateral instrumentation and fusion instead of two-level^{9-10,12}. However, there is no scientific proof to help determine the number of fusion levels and this decision is based on the surgeon's empirical experience. In a prospective study by Inage et al, two-level fusion with local bone grafts was shown to cause increased pseudoarthrosis⁹. Similarly in a study by Deguchi et al, single-level fusions showed an 82 % fusion rate, and two-level fusions, a 74 % rate radiologically². Higher fusion rates in the two-level fusion group were achieved with rigid spinal implants. The clinical success of that study correlated with the radiological fusion rates. Contrary to the information in literature, local bone grafts mixed with demineralized bone matrix (DBM) were

used in the current study to achieve union for both groups and no union problem was seen in the two-level fusion group. Pseudoarthrosis was observed in four cases in the one -level fusion group.

Although some authors have reported incongruity between the clinical results of spondylolisthesis patients and union rates, VAS and ODI are the most reliable clinical tests to evaluate spondylolisthesis^{4,8,14}. The results of the current study reveal that two-level posterior instrumentation with PLF has better results than single-level surgery according to VAS and ODI.

This study has some limitations. Firstly, the retrospective design did not allow for uniformity of the groups. The number of patients was also limited to achieve generalized results. Although the pedicle screws were all 6.5 mm in size, they were not all from the same manufacturer, so implant problems were disregarded.

CONCLUSION:

In conclusion, this study has demonstrated that two-level posterior instrumentation and PLF with local bone grafts and DBM have significantly better clinical and radiological results than single-level surgery. To avoid potential complications of PLIF, two-level PLF can be an alternative treatment option.

REFERENCES:

1. Bernhardt M, Swartz DE, Clothiaux PL, Crowell RR, White AA. Posterolateral lumbar and lumbosacral fusion with and without pedicle screw internal fixation. *Clin Orthop Relat Res* 1992; 284: 109-115.
2. Deguchi M, Rapoff AJ, Zdeblick TA. Posterolateral fusion for isthmic spondylolisthesis in adults: analysis of fusion rate and clinical results. *J Spinal Disord* 1998; 11: 459-464.
3. Ekman P, Möller H, Tullberg T, Neumann P, Hedlund R. Posterior lumbar interbody fusion versus posterolateral fusion in adult isthmic spondylolisthesis. *Spine* 2007; 32: 2178-2183.
4. Fischgrund JS, Mackay M, Herkowitz HN, Brower R, Montgomery DM, Kurz LT. Degenerative lumbar spondylolisthesis with spinal stenosis: a prospective, randomized study comparing decompressive laminectomy and arthrodesis with and without spinal instrumentation. *Spine* 1997; 22: 2807-2812.
5. Floman Y. Progression of lumbosacral isthmic spondylolisthesis in adults. *Spine* 2000; 25: 342-347.

6. Floman Y, Millgram MA, Ashkenazi E, Smorgick Y, Rand N. Instrumented slip reduction and fusion for painful unstable isthmic spondylolisthesis in adults. *J Spinal Disord Tech* 2008; 21: 477-483.
7. Fredrickson BE, Baker D, McHolick WJ, Yuan HA, Lubicky JP. The natural history of spondylolysis and spondylolisthesis. *J Bone Joint Surg* 1984; 66-A: 699-707.
8. Herkowitz HN, Kurz LT. Degenerative lumbar spondylolisthesis with spinal stenosis. A prospective study comparing decompression with decompression and intertransverse process arthrodesis. *J Bone Joint Surg* 1991; 73-A: 802-808.
9. Inage K, Ohtori S, Koshi T, Suzuki M, Takaso M, Yamashita M, Yamauchi K, Inoue G, Orita S, Eguchi Y, Ochiai N, Kishida S, Kuniyoshi K, Aoki Y, Nakamura J, Ishikawa T, Arai G, Miyagi M, Kamoda H, Suzuki T, Toyone T, Takahashi K. One, two-, and three-level instrumented posterolateral fusion of the lumbar spine with a local bone graft: a prospective study with a 2-year follow-up. *Spine* 2011; 36: 1392-1396.
10. Jacobs WC, Vreeling A, De Kleuver M. Fusion for low-grade adult isthmic spondylolisthesis: a systematic review of the literature. *Eur Spine J* 2006; 15: 391-402.
11. Kim NH, Lee JW. Anterior interbody fusion versus posterolateral fusion with transpedicular fixation for isthmic spondylolisthesis in adults. A comparison of clinical results. *Spine* 1999; 24: 812-817.
12. Madan S, Boeree NR. Outcome of posterior lumbar interbody fusion versus posterolateral fusion for spondylolytic spondylolisthesis. *Spine* 2002; 27: 1536-1542.
13. Möller H, Hedlund R. Surgery versus conservative management in adult isthmic spondylolisthesis--a prospective randomized study: part 1. *Spine* 2000; 25: 1711-1715.
14. Ohtori S, Suzuki M, Koshi T, Takaso M, Yamashita M, Yamauchi K, Inoue G, Suzuki M, Orita S, Eguchi Y, Ochiai N, Kishida S, Kuniyoshi K, Nakamura J, Aoki Y, Ishikawa T, Arai G, Miyagi M, Kamoda H, Toyone T, Takahashi K. Single-level instrumented posterolateral fusion of the lumbar spine with a local bone graft versus an iliac crest bone graft: a prospective, randomized study with a 2-year follow-up. *Eur Spine J* 2011; 20: 635-639.
15. Osterman K, Schlenzka D, Poussa M, Seitsalo S, Virta L. Isthmic spondylolisthesis in symptomatic and asymptomatic subjects, epidemiology, and natural history with special reference to disk abnormality and mode of treatment. *Clin Orthop Relat Res* 1993; 297: 65-70.
16. Sears W. Posterior lumbar interbody fusion for lytic spondylolisthesis: restoration of sagittal balance using insert-and-rotate interbody spacers. *Spine J* 2005; 5: 161-169.
17. Spruit M, van Jonbergen JP, de Kleuver M. A concise follow-up of a previous report: posterior reduction and anterior lumbar interbody fusion in symptomatic low-grade adult isthmic spondylolisthesis. *Eur Spine J* 2005; 14: 828-832.
18. Suk SI, Lee CK, Kim WJ, Lee JH, Cho KJ, Kim HG. Adding posterior lumbar interbody fusion to pedicle screw fixation and posterolateral fusion after decompression in spondylolytic spondylolisthesis. *Spine* 1997; 22: 210-220.
19. Swan J, Hurwitz E, Malek F, van den Haak E, Cheng I, Alamin T, Carragee E. Surgical treatment for unstable low-grade isthmic spondylolisthesis in adults: a prospective controlled study of posterior instrumented fusion compared with combined anterior-posterior fusion. *Spine J* 2006; 6: 606-614.
20. Zagra A, Giudici F, Minoia L, Corriero AS, Zagra L. Long-term results of pediculo-body fixation and posterolateral fusion for lumbar spondylolisthesis. *Eur Spine J* 2009; 18: 151-155.

